

F Series Outdoor Fixed LED Display



Key Benefits

- Uniform color and high contrast ratio, bringing up fresh and natural image
- Low power consumption and fine heat release
- Super wide viewing angle increasing its value by covering more audience
- No deformation under sunlight by the use of anti-UV modules
- Long service time and low attenuation by applying dual channels for heat dissipation
- High protection grade of IP65 achieved by patented mask design with waterproof and dustproof function
- Safe and reliable operation ensured by stable signal and power supply



FRESHCOLOR

FRESHCOLOR



energy saving

energy saving



High Contrast

High Contrast



50,000 H

Lifetime

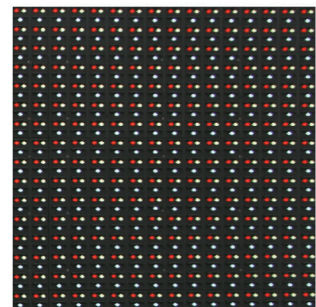


IP65

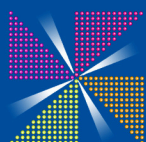
protection grade



Panel



DIP



ShowVision
Professional LED Solutions

A. Einsteinweg 21 G6
2408 AP Alphen aan den Rijn (NL)
tel. +31 (0)172 - 41 77 55
Info@ShowVision.nl / www.ShowVision.nl

Application



Specifications of F10/FX10/F12/F16/F20/F25

Item	Value						Unit
Pixel Pitch	10	10.6	12	16	20	25	mm
Pixel Density	10000	8789	6944	3906	2500	1600	pixels/m ²
Pixel Configuration	DIP						-
Viewing Angle	120(Horizontal),70(Vertical)						deg.
Brightness	7500	7000	8000	8000	6000	7500	-
Grey Level	16						bit
Refresh Rate	1920						Hz
Panel Size(W)×(H)	1600×960	1536×1024	1536×960	1536×1024	1440×960	1600×1000	mm
Panel Size(W)×(H)	63.00×37.80	60.47×40.31	60.47×37.80	60.47×40.31	56.69×37.80	62.99×39.37	inch
Panel Resolution	160×96	144×96	128×80	96×64	72×48	64×40	pixels
Panel Material	Iron						-
Panel Weight	100	95	95	102	90	104	kg
Module Size(W)×(H)	160×320	256×256	192×192	256×256	240×240	200×200	mm
Module Size(W)×(H)	6.30×12.60	10.08×10.08	7.56×7.56	10.08×10.08	9.45×9.45	7.87×7.87	inch
Module Resolution	16×32	24×24	16×16	16×16	12×12	8×8	pixels
Protection Grade	IP65/IP54(Front/Rear)						-
Serviceability	Rear						-
Voltage(V)	AC 110~AC 220						-
Avg.Power Consumption	150 (AC)	200 (AC)	160 (AC)	160 (AC)	190 (AC)	130 (AC)	W/m ²
Max.Power Consumption	450 (AC)	600 (AC)	480 (AC)	480 (AC)	570 (AC)	390 (AC)	W/m ²
Driving Mode	1/4 scan	1/4 scan	1/2 scan	Static	Static	Static	-
Operating Temp/Humidity	-20~40/10~90						°C/%RH
Storage Temp/Humidity	-40~60/10~80						°C/%RH
Lifetime(Normal Temp)	≥50000						hours
Compliant Standard	CE FCC RoHS						-

*All specifications are correct at time of print, but they are subject to change without further notice.